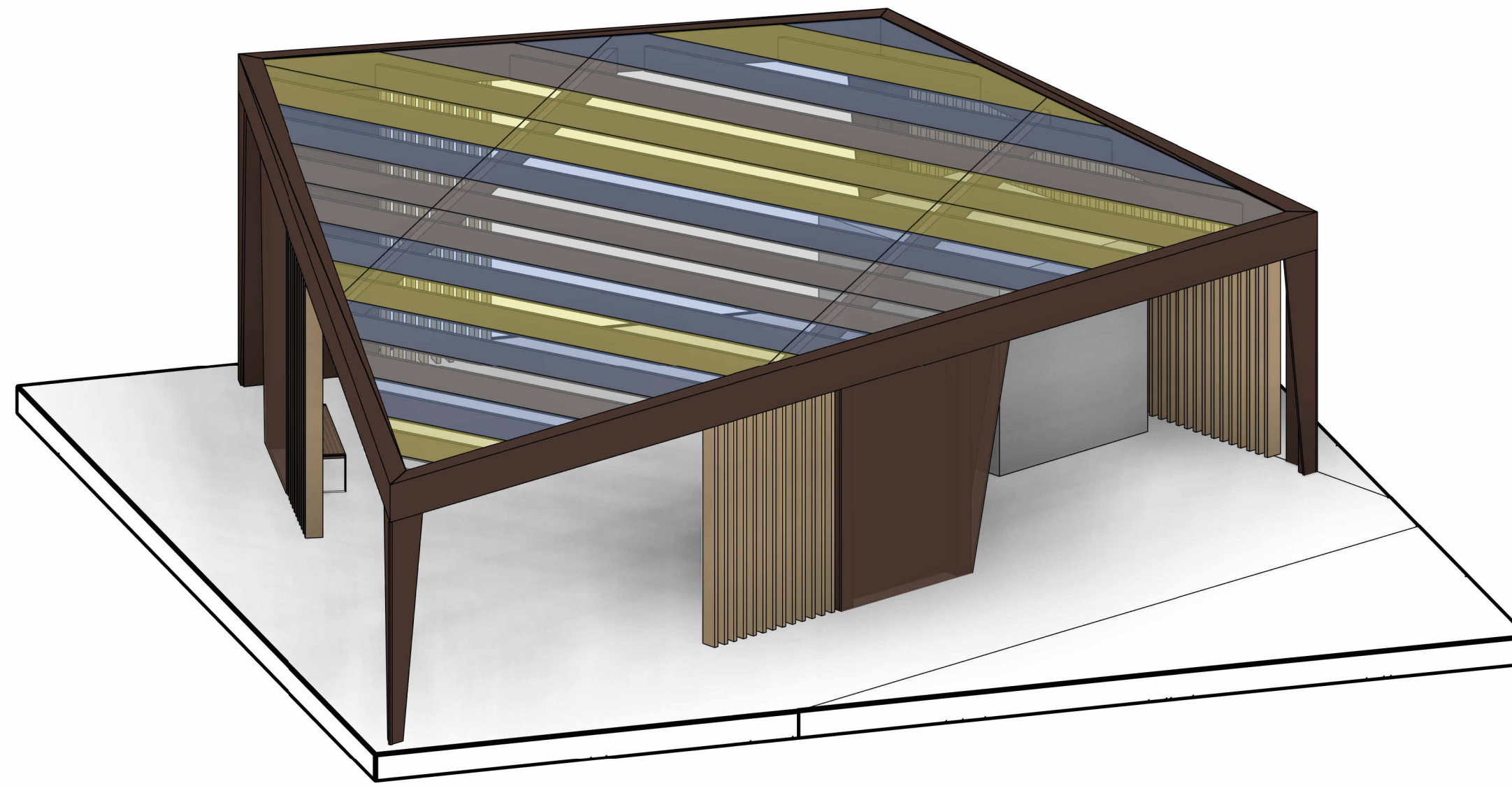
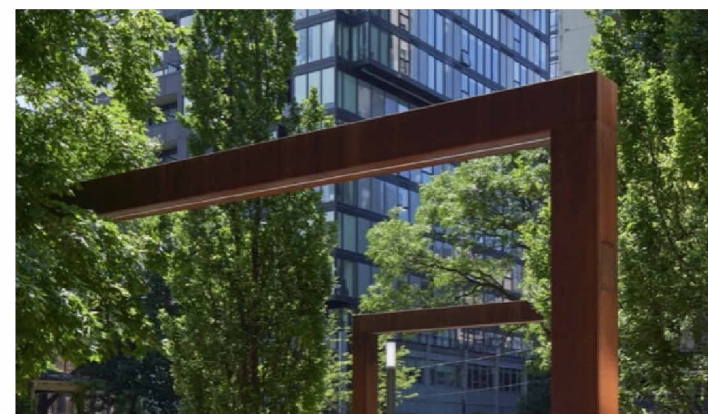


1 Toilet Facilities & Shelter Detail Plan
SCALE - 1 : 50



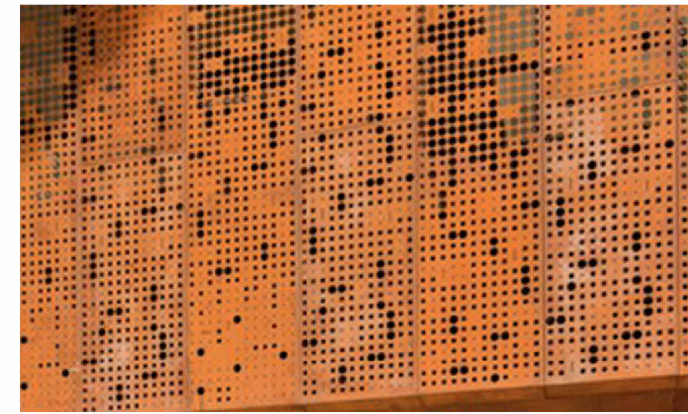
3 Toilet Facilities & Shelter 3D



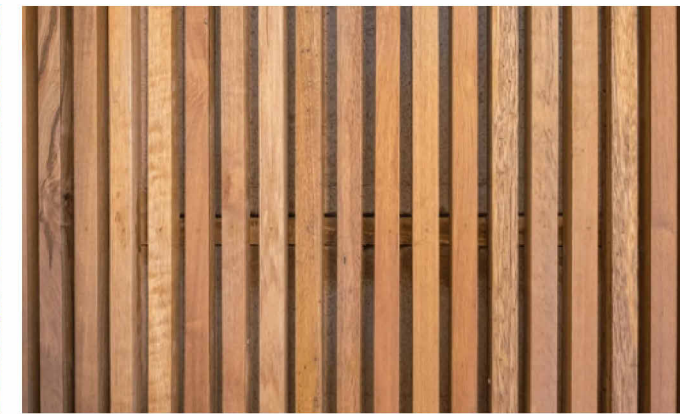
1A. Weathering Steel Framing



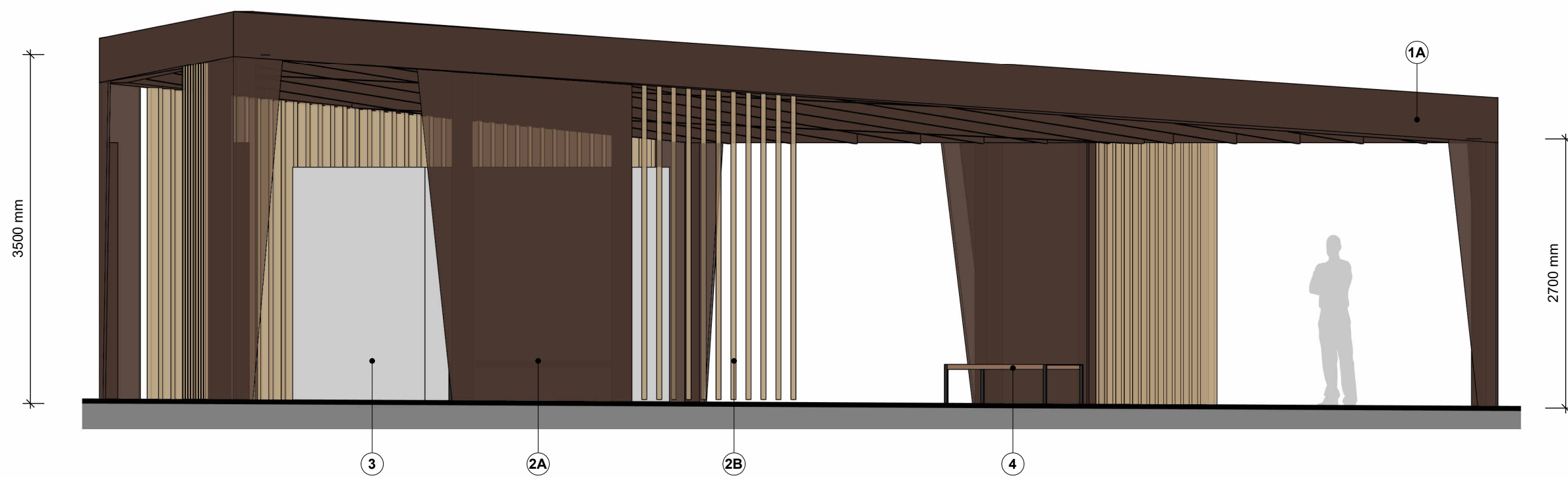
1C. Colour Coated Glazing



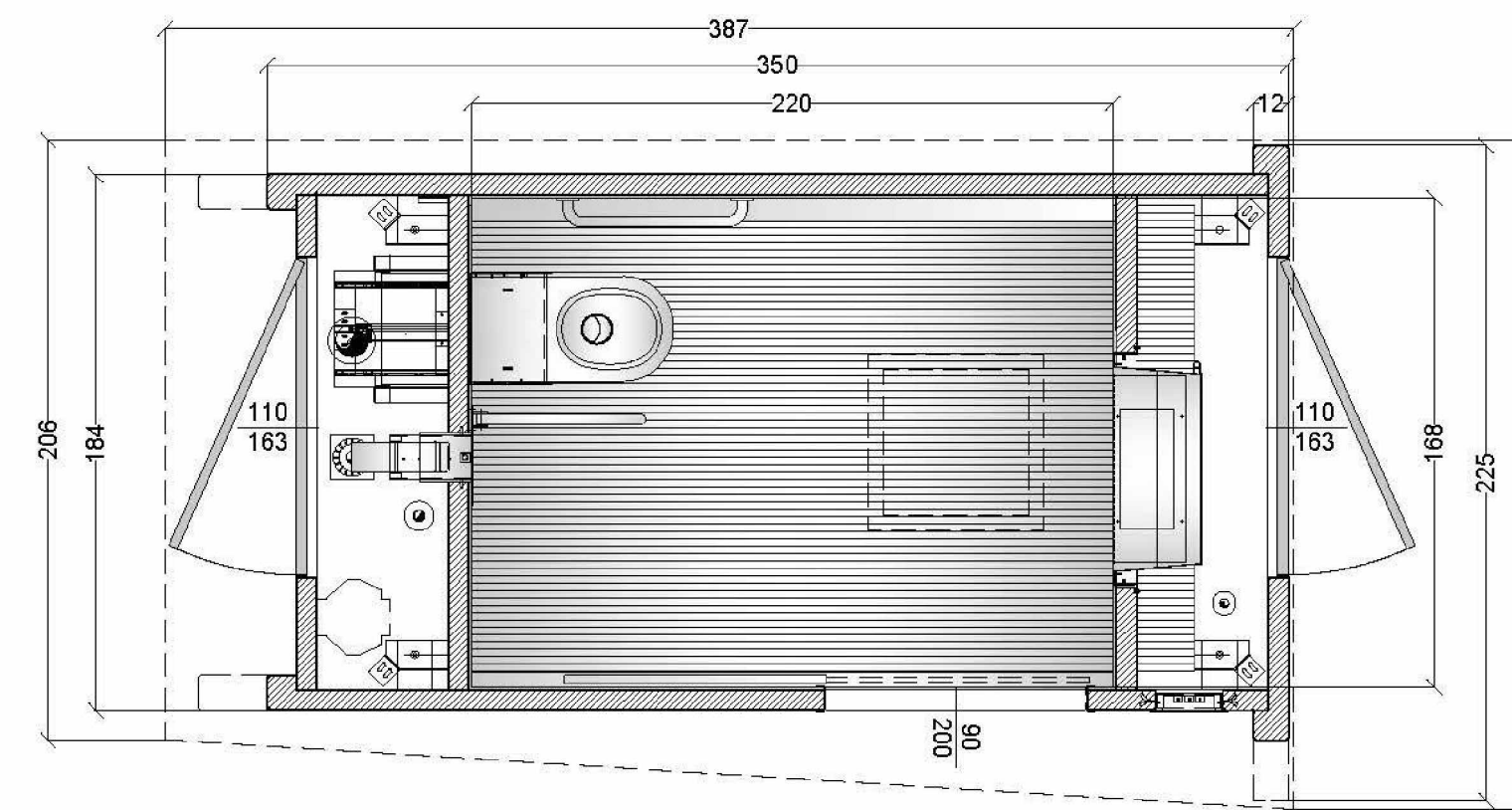
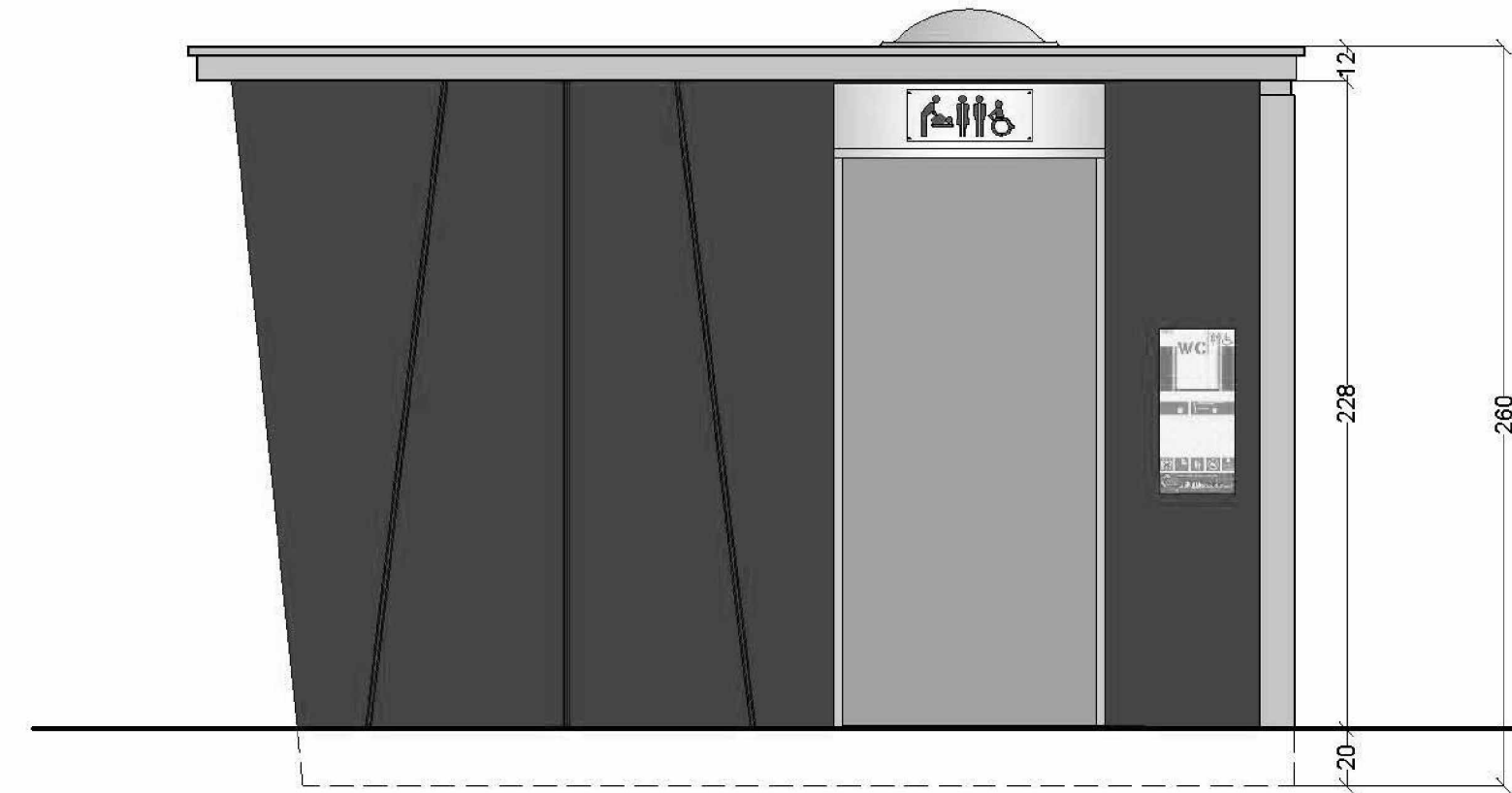
2A. Weathering steel perforated panel



2B. Hardwood timber slat windscreen



2 Toilet Facilities & Shelter Elevation
SCALE - 1 : 50

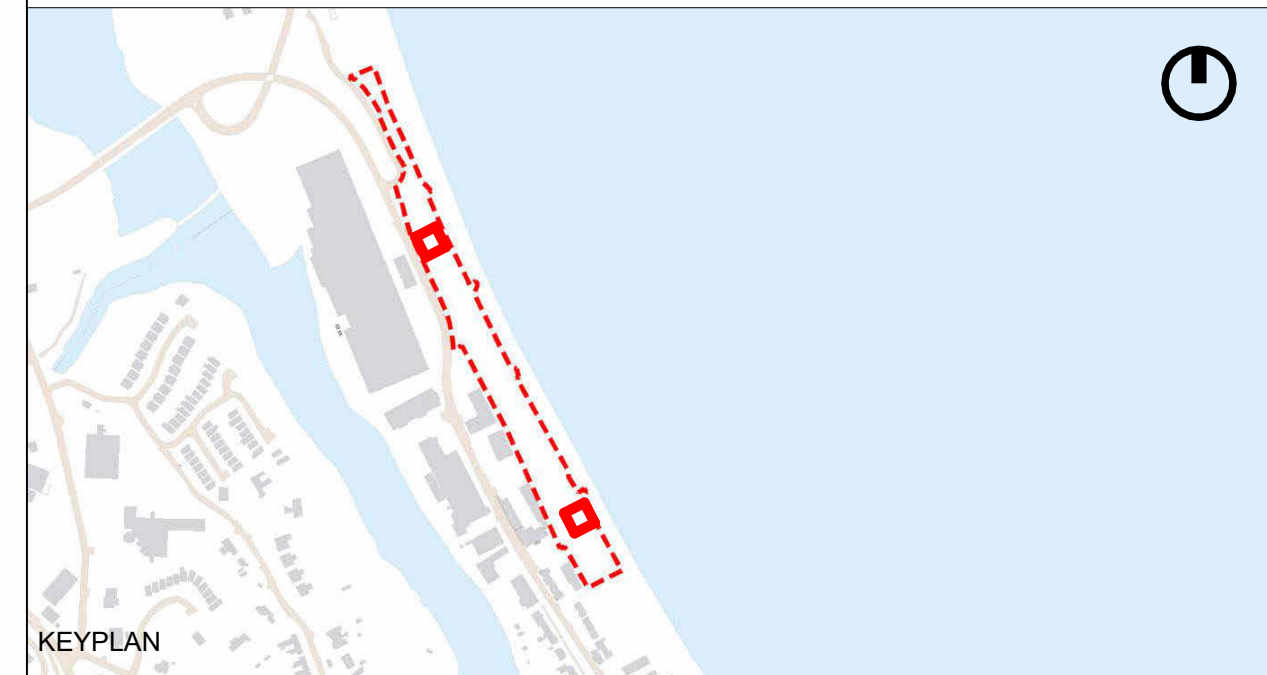


3. Self Cleaning Toilet (single unit model)
Available from Sano2, model code S5AH01-EUROPE or similar

Notes:

- Shelter**
 - A. Weathering steel framing
 - B. Steel columns inside cladding
 - C. Colour coated glazing
- Windscreens**
 - A. Weathering steel perforated panel
 - B. Hardwood timber slat windscreen
- Facilities**
 - Self-cleaning toilet
 - Seno2 - S4 single unit model or similar
- Furniture**
 - Hardwood timber bench

Drawing to be read in conjunction with 24272-2-D01 Design Statement



A 24.01.2025 Adjusted based on WCC comments
REV DATE COMMENTS

DRAFT FOR PLANNING ONLY

CUNNANE STRATTON REYNOLDS

LANDPLANNING & DESIGN

GAINSBORO HOUSE,
24 SUFFOLK STREET, DUBLIN 2
TEL 01 661 0419 FAX 01 661 0431
EMAIL info@csrlandplan.ie

PROJECT:	DATE:	13/12/24
The Murrough Waterfront Park Enhancement	SCALE:	AS INDICATED @ A1
	DRAWN:	TS
DRAWING:	CHECKED:	MPO
Toilet Facilities & Shelters Details	DWG. NO:	24272-2-911